

AVETH - MARIE SKŁODOWSKA-CURIE FUNDING

European Funding

EU GrantsAccess | Patrik Winiger | 30 April 2020

GOAL



- Overview of available career funding
- Introduction to European Postdoc funding
- Guide towards our office, if you plan an application at UZH or ETH

EU GrantsAccess (www.grantsaccess.ethz.ch)



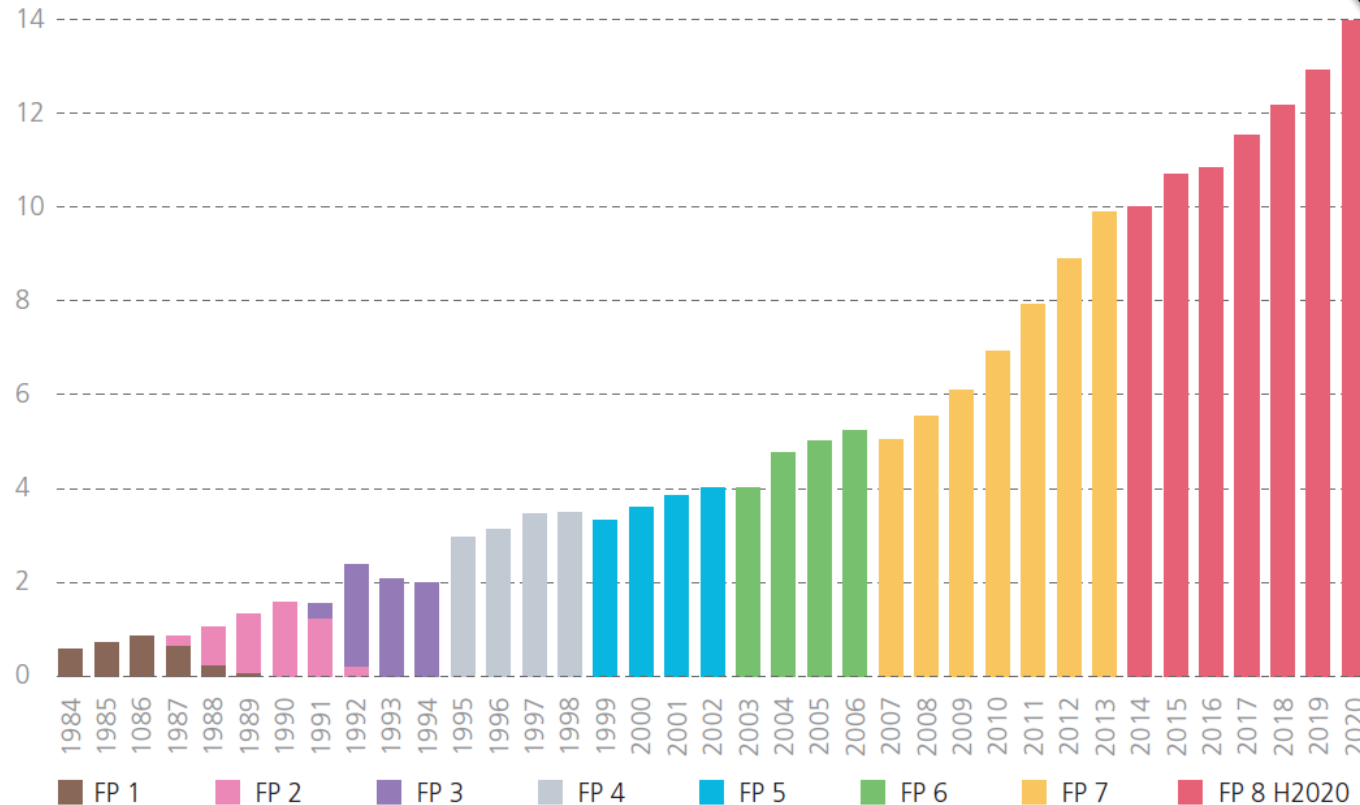
- Joint office of the University of Zurich and ETH Zurich
 - The office for International Research Programmes
 - Advise about funding opportunities (Focus on H2020, next year HE)
 - Administrative, financial and legal support
 - Idea and Proposal checking
 - Proposal pre-screening
 - Proposal Writing Workshops
 - Information events
-
- Get in touch with us when planning to submit a proposal: grants@sl.ethz.ch
 - All our services are free of charge!



Finding funding
made easy.

EU Framework programmes

Figure 2: Annual budgets of the European Research Framework Programmes (in EUR billion, at current prices)



Horizon Europe

#HE #HEU
#HEurope

Source: European Commission (COM(2004) 533, 786/2004/CE, COM(2005) 119 final, SEC(2014) 357 final), cf. Table 1 in Appendix C

<https://www.sbfi.admin.ch/sbfi/en/home/research-and-innovation/international-cooperation-r-and-i/eu-framework-programmes-for-research/horizon-europe.html> -> Swiss info on HE

https://ec.europa.eu/info/horizon-europe-next-research-and-innovation-framework-programme_en#proposal -> EU info on HE

**Excellent Science
(24.4 B €)**European Research
Council
(13.1 B €)Future and Emerging
Technologies
(2.7 B €)Marie Skłodowska-Curie
Actions
(6.1 B €)Research Infrastructures
(2.5 B €)**Industrial Leadership
(17 B €)**LEIT = Leadership in
enabling and industrial
technologies

- ICT
- Nano, new materials
- Biotechnology
- Space

(13.5 B €)

Access to Risk Finance
(2.9 B €)Innovation in SMEs
(0.6 B €)**Societal Challenges
(29.7 B €)**Health
(7.5 B €)Food
(3.9 B €)Energy
(6 B €)Transport
(6.3 B €)Climate
(3 B €)Inclusive Societies
(1.3 B €)Security
(1.7 B €)**Spreading Excellence (0.8 B €)****Science for Society (0.5 B €)****EIT (2.7 B €)****JRC (1.9 B €)****Euratom (1.6 B €)**

EU Framework programmes: Horizon Europe (HE) 2021 – 2027

Pillar 1 Excellent Science

European Research Council

Marie Skłodowska-Curie
Actions

Research Infrastructures

Pillar 2 Global Challenges and European Industrial Competitiveness

- Clusters
- Health
 - Culture, Creativity and Inclusive Society
 - Civil Security for Society
 - Digital, Industry and Space
 - Climate, Energy and Mobility
 - Food, Bioeconomy, Natural Resources, Agriculture and Environment

Joint Research Centre

Pillar 3 Innovative Europe

European Innovation Council

European innovation
ecosystems

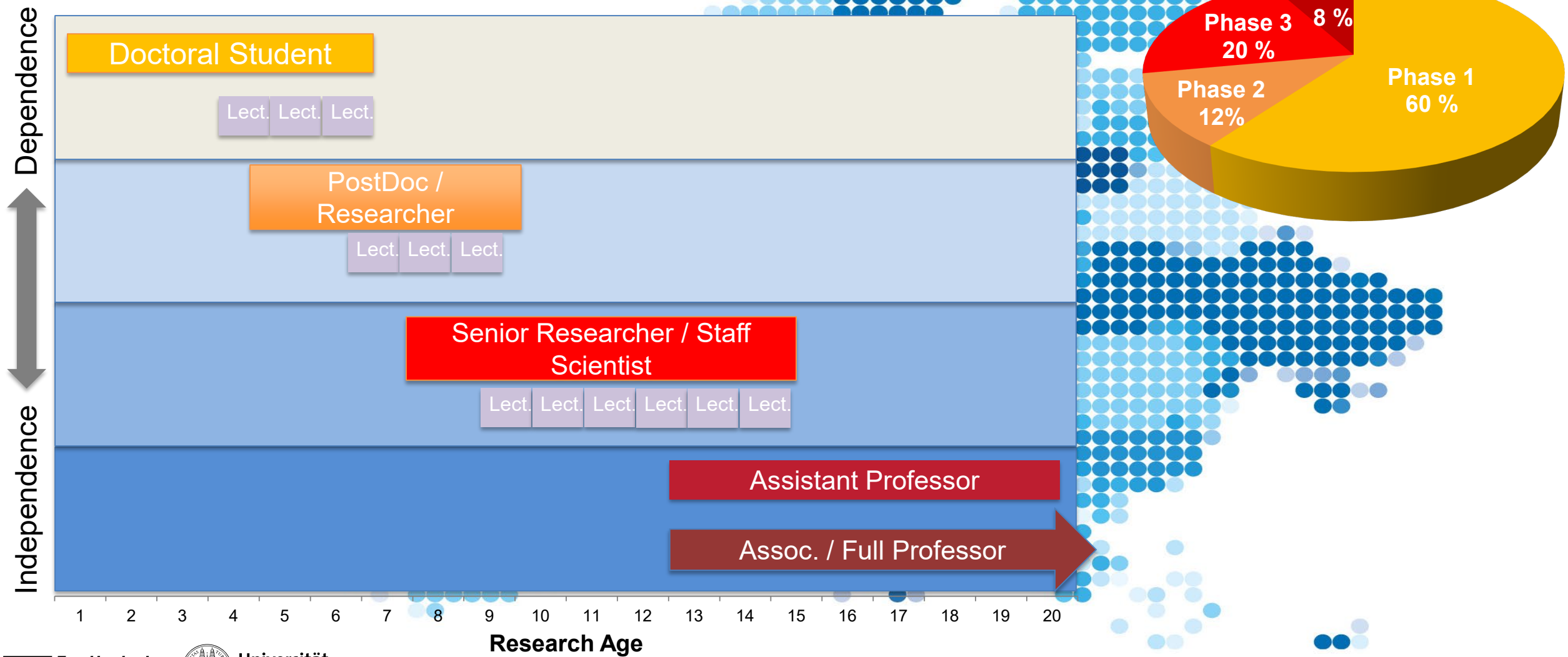
European Institute of
Innovation
and Technology

Widening Participation and Strengthening the European Research Area

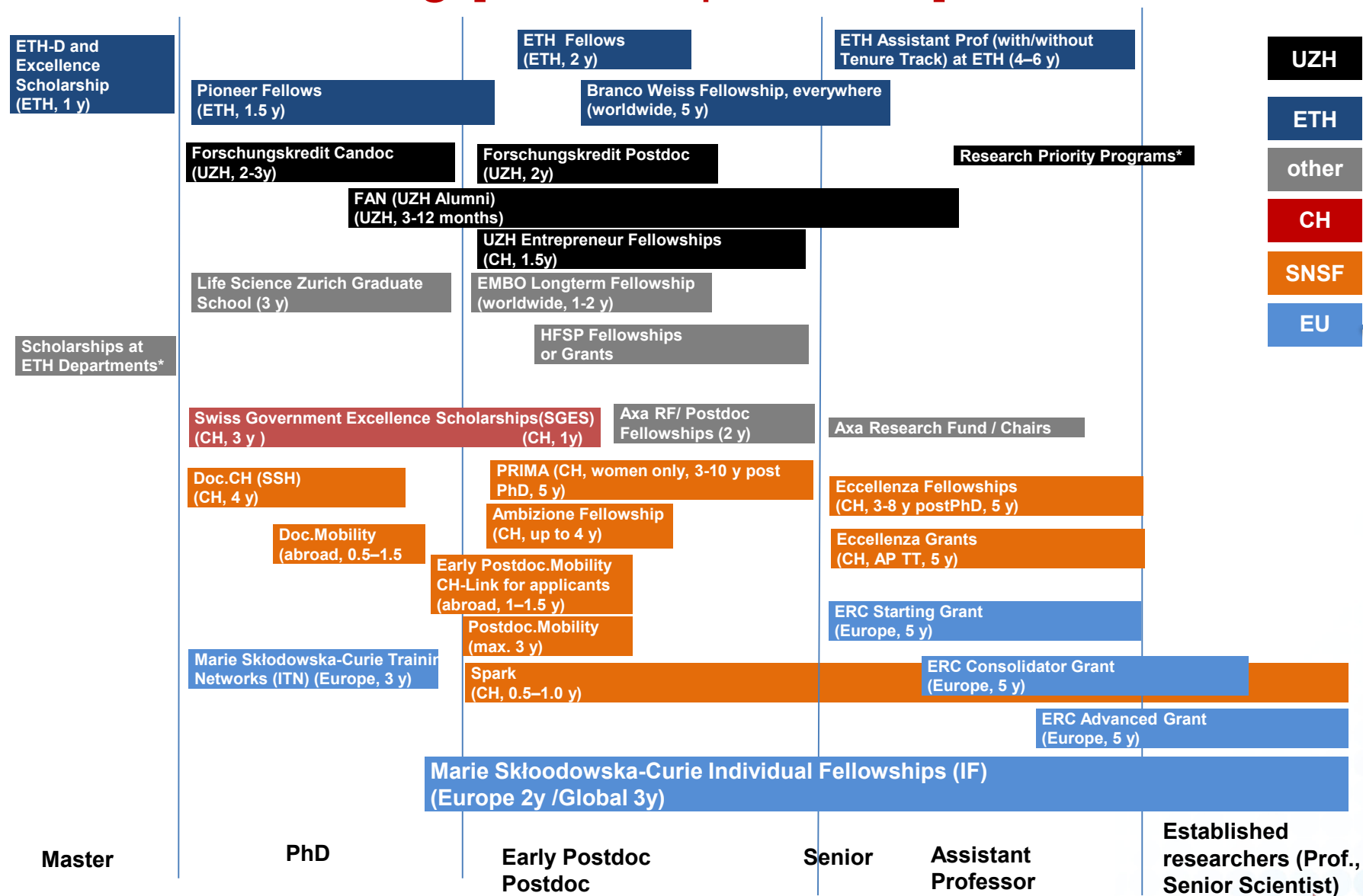
Widening participation and spreading excellence

Reforming and Enhancing the European R&I system

Academic Career Map (CH)



Career Funding [status April-2020]



UZH

ETH

other

CH

SNSF

EU

ETH-internal and SNSF programmes

ETH Zurich
Office of Research

HG E 34.1
Rämistrasse 101
8092 Zurich
Switzerland

+41 44 63 22083 →
research@sl.ethz.ch



eu
grants
access



Career phases

*no detailed description

UZH: FAN (Fonds zur Förderung des akademischen Nachwuchses)



Aim

- Fellowship AND Grants



Requirements

- Applicants must be employed at the UZH or be associated with it through their planned scientific activities.



Duration

- Fellowships: 1 year
- Grants 3 - 6 months



Contribution

- Fellowships: CHF 50'000 to CHF 100'000
- Grants: CHF 20'000 to CHF 40'000



Submission
Deadline

- February 15

UZH: Forschungskredit Postdoc



University of
Zurich^{UZH}



Aim

- Funding to support them in carrying out or finishing a research project at the UZH.



Requirements

- Postdocs and habilitation candidates (until conferral of habilitation) who are either employed by or affiliated with the UZH due to planned research projects.
- Female and male Postdocs whose research activities have been interrupted or delayed because of incompatibility reasons may apply simultaneously for the Suslowa-Postdoc-Fellowship



Duration

- 24 months at the most



Contribution

- CHF 50'000-100'000.



Submission Deadline

- February 1st

UZH: UZH Entrepreneur Fellowships



University of
Zurich^{UZH}



Aim

- Funding, training, lab facilities and expert advice to young researchers who intend to start up a company based on UZH research.



Requirements

- The fellowships are currently offered only to projects in BioTech and MedTech



Duration

- 18 months



Contribution

- CHF 150'000



Submission
Deadline

- April 15th
- September 15th

ETH Zürich: Excellence & ETH-D Scholarships



eu
grants
access



Aim

- The Excellence Scholarship & Opportunity Programme (ESOP) supports students with a scholarship, mentorship and a network of the ETH Foundation. The scholarship covers the full study and living costs during the Master's degree course.
- The Master Scholarship Programme (MSP) contains a partial stipend as well as additional offers by the Department (assistantship or additional scholarship).



Requirements

- Excellent students (national and international) wishing to pursue their Master's degree at ETH Zurich.
- A very good result in the Bachelor' (top 10% of Bachelor's programme = grade A).
- Not yet enrolled in a Master's degree programme at ETH Zurich



Duration

- Duration of the Master's programme



Contribution

- **Excellence Scholarship** consists of a grant covering living and study expenses (CHF 12,000 per semester) as well as a tuition fee waiver.
- **ETH-D Scholarship** consists of a partial stipend for living and study expenses (CHF 7,500 per semester) as well as a tuition fee waiver. Additional funding available at Department level.



Submission Deadline

- 15 December



Aim

- A Pioneer Fellowship is awarded to an individual or groups of individuals intending to independently develop a highly innovative product or service to be exploited commercially and/or for the benefit of society.



Requirements

Pioneer Fellowships are awarded to candidates who fulfill the following criteria:

- A team of 1-2 entrepreneurial people with a master or doctoral degree from ETH Zurich,
- Submission 6 months ahead or after degree.
- A promising business case
- A project where a company has not yet been incorporated
- Support of a host professor at ETH



Duration

- 12-18 months



Contribution

- Max. of 150'000 CHF for 12-18 months



Submission Deadline

- 1 March and 1 September



Aim

- The "ETH Zurich Postdoctoral Fellowship Program" supports incoming fellowships for postdoctoral researchers at the ETH Zurich. The program is intended to foster high-potential, young researchers who have already demonstrated excellence in terms of internationally competitive achievements in the early stages of their professional careers



Requirements

- Doctoral degree within two years of the submission deadline from an institution other than the ETH Zurich or the University of Zurich
- At the time of the relevant submission deadline, researchers must also not have carried out their main activity (work, studies, etc.) at either of the two institutions for more than six months prior to the reference date.
- Applicants have at least one scientific publication in a peer-reviewed journal or have been awarded a prize for their doctoral thesis



Duration

- 24 months



Contribution

- ETH PostDoc salary
- Additional funds for travel, research costs etc. up to 12'000 CHF/y



Submission Deadline

- 1 March and 1 September

ETH Zürich: ITS (Institute for Theoretical Studies) Junior & Advanced Fellows



ETH zürich



Aim

- Fellows of the ETH Institute for Theoretical Studies are independent postdocs of exceptional talent and promise, having achieved significant results in mathematics, theoretical computer science or theoretical natural sciences.



Requirements

- Nominations by faculty members and senior researchers of universities and research institutions.
- PhD from a University other than ETH Zurich



Duration

- Up to 3 years



Contribution

- ETH PostDoc salary



Submission
Deadline

- Usually nomination until September



Aim

- The fellowship is designed for postdocs at home in sciences, engineering and social sciences who are willing to engage in a dialogue on relevant social, cultural, political or economic issues across the frontiers of their particular discipline
- The ideal applicant has the competencies to design a surprisingly novel and scientifically rigorous research project which blazes new trails, profiting from the freedom uniquely offered by the fellowship.



Requirements

- PhD up to 5 years before deadline
- Project departs from the mainstream of research in your discipline
- Record of outstanding scientific achievement
- Not a holder of a faculty-equivalent position



Duration

- 5 years, anywhere in the world



Contribution

- CHF 100,000 per year



Submission Deadline

- January 15

Swiss Government Excellence Fellowships



Aim

- Each year the Swiss Confederation awards Government Excellence Scholarships to promote international exchange and research cooperation between Switzerland and over 180 other countries. Recipients are selected by the awarding body, the Federal Commission for Scholarships for Foreign Students (FCS).



Requirements

- Young researchers from abroad
- Master's degree or PhD
- Foreign artists holding a bachelor's degree
- Academic supervisor/Professor at a Swiss cantonal universities, universities of applied sciences and the two federal institutes of technology (Research scholarship)
- Swiss conservatory or university of the arts (Art scholarship)



Duration

- 12 months for PostDocs/Research Fellows, 36 months for PhD students



Contribution

- Scholarship



Submission Deadline

- September - December



Aim

- Write a dissertation
- In the humanities and social sciences
- Topic of their own choice
- At a higher education institution in Switzerland



Requirements

- Master degree (or similar degree) with excellent marks from a higher education institution in Switzerland or similar foreign degree for applicants with Swiss nationality
- Submission to the Research Commission of the SNSF no more than 2 years after the master degree
- Generally at least one change of institution between bachelor and start of PhD or a planned stay abroad of at least one semester during doctoral studies



Duration

- 2-4 years



Contribution

- Grantee's own salary (according to the SNSF salary scales for doctoral students)
- Costs directly related to project implementation: material of enduring value, consumables, travel and conference expenses, scientific open access e-publications (articles, digital books), etc.



Submission Deadline

- 10 March and 10 September



Aim

- Research stay abroad for doctoral students



Requirements

- Matriculation as a doctoral student for at least 12 months
- Link with Switzerland: Swiss nationality, permanent residence, residence or cross-border commuter permit, or marriage resp. registered partnership with a Swiss
- At least 1 year of activity at a Swiss research institution for applicants with foreign nationality



Duration

- 6 –18 months



Contribution

- Stipend (depending on family status and target country)



Submission Deadline

- 1 March and 1 September

SNSF: PRIMA (Promoting Women in Academia)



eu
grants
access



Aim

- Selective promotion of excellent women researchers who have a potential for an academic career (i.e. to be appointed as a professor)
- Lead your own team to realise your independent research project



Requirements

- MD or PhD or 3 years of research activities as equivalent qualification
- 2–10 years after PhD/equivalent qualification
- 2 years of postdoctoral research activity



Duration

- 5 years



Contribution

- Salary
- max. 750'000 CHF project funds



Submission Deadline

- 1 November 2018

SNSF: Early.PostDoc Mobility



Aim

- Research stay abroad for postdocs starting their career



Requirements

- Doctorate (PhD) already obtained or obtainment within 9 months, or medical training completed with a doctorate (MD)
- Doctorate obtained no more than 2 years ago; medical researchers must have passed the state examination no more than 6 years ago
- Link with Switzerland: Swiss nationality, permanent residence, residence or cross-border commuter permit, or marriage resp. registered partnership with a Swiss
- At least 3 years of activity at a Swiss research institution for applicants with foreign nationality



Duration

- 12 –18 months



Contribution

- Stipend (depending on family status and target country)



Submission Deadline

- 1 March and 1 September



Aim

- Research stay abroad for postdocs starting their career



Requirements

- Doctorate (PhD, MD-PhD) or completed studies in human, dental, veterinary, social or preventive medicine
- Submission up to 3 years after the doctoral exam (PhD, MD-PhD)
- Medical researchers without MD-PhD: submission up to 8 years after the state examination and at least 3 years of clinical activity
- Link with Switzerland: Swiss nationality, permanent residence, residence or cross-border commuter permit, or marriage resp. registered partnership with a Swiss
- At least 2 years of activity at a Swiss research institution for applicants with foreign nationality



Duration

- 12 –24 months with a return option to Switzerland (3 –12 months)



Contribution

- Stipend (depending on family status and target country)



Submission Deadline

- 1 February and 1 August



Aim

- Create conditions for starting an independent career in Switzerland



Requirements

- Postdoctoral research activities of at least 12 months at a different university from that of the dissertation
- Eligibility window: 1-4 years after PhD/equivalent qualification
- MD: at least 3 years of postgraduate clinical activity; up to 9 years after the medical license



Duration

- 4 years



Contribution

- Salary
- max. 400'000 CHF project funds



Submission Deadline

- 1 November 2018

SNSF: Eccellenza Fellowships



Aim

- Enable your own team at professorial level to realise your independent research project



Requirements

- Eligibility window: 3–8 years after PhD/equivalent qualification
- MD: at least 3 years postgraduate clinical activity; up to 12 years after the medical license
- Postdoctoral research experience of at least 24 months at a different university from that of the dissertation; at least 12 months abroad
- Swiss university degree, Swiss nationality or at least 2 years of research activity in Switzerland



Duration

- 5 years



Contribution

- salary of grantee (determined in agreement with host)
- Project funds up to CHF 1'000'000 for 5 years



Submission Deadline

- 15 February



Aim

- Enable your own team at professorial level to realise your independent research project



Requirements

- Assistant professor with tenure track in Switzerland
- Employment no earlier than 18 months before the submission deadline or due to commence on the project start date at the latest
- No requirement on eligibility window or mobility



Duration

- 5 years



Contribution

- salary of grantee (determined in agreement with host)
- Project funds up to CHF 1'500'000 for 5 years



Submission Deadline

- 15 February



Aim

- Fund rapid testing or development of new scientific approaches, methods, theories, standards, ideas for application, etc. It is designed for projects that show unconventional thinking and introduce a unique approach



Requirements

- Applicants must conduct the Spark project at a Swiss research institution
- Applicants must have a doctorate
- Applicants must either be employed at an eligible Swiss host institution or must have the support of an eligible Swiss institution



Duration

- 6 to 12 months



Contribution

- Between CHF 50,000 and CHF 100,000



Submission Deadline

- March 11

ERC: Consolidator Grants



Aim

- Support excellent researchers who want to **consolidate their independence** by establishing a research team and continuing to develop a success career in Europe? Also for researchers who have recently created an independent, excellent research team and want to strengthen it.



Requirements

- 7-12 years post PhD
- Proven research independence, several important publications without participation of PhD supervisor
- European Host Institution (or associated country)



Duration

- 5 years



Contribution

- Project funds up to 2'000'000 € for 5 years
- + 1 Mio (conditional): major equipment, access to large facilities, major experimental and field work, (no personnel costs!)



Submission Deadline

- -> Next deadline (perhaps) in 2021 #HE

ERC: Advanced Grants



Aim

- For established, leading principal investigator who want long-term funding to pursue a ground-breaking, high-risk project.



Requirements

- Active researchers who have a track-record of significant research achievements in the last 10 years.
- European Host Institution (or associated country)



Duration

- 5 years



Contribution

- Project funds up to 2'500'000 € for 5 years



Submission
Deadline

- August 2020

MSCA: Innovative Training Networks



Aim

- Collaborative project with the goal of training the next generation of researchers
- Salaries for >15 PhD students for 3 years each
- Academic and non-academic partners
- Training of PhD: skills, summer schools, workshops, conferences, secondments



Requirements

- Mobility for PhD Students is a the key requirement



Duration

- 4 years



Contribution

- Salary of PhD students
- Additional money for training, travel, research and management



Submission Deadline

- January

-> Writing of a proposal a lot of work for the coordinator, but check <http://ec.europa.eu/euraxess/index.cfm/jobs/> for open positions

MSCA: Individual Fellowships (IF) – European Fellowships or Global Fellowships



Aim

- Career support for experienced researchers (i.e. ≥ 4 y of research/ PhD studies)
- Tool to fill the gap in your CV



Requirements

- Mobility for PostDocs is the key requirement → example on coming slide
- No biological or academic age limit
- European: any nationality
- Global: EU long-term residents only*
* ≥ 5 years residence in EU or associate country (e.g. Switzerland)



Duration

- European: ≤ 2 years
- Global: ≤ 3 years



Contribution

- Salary of PostDoc → example on coming slide
- Additional money for training, travel, research and management



Submission Deadline

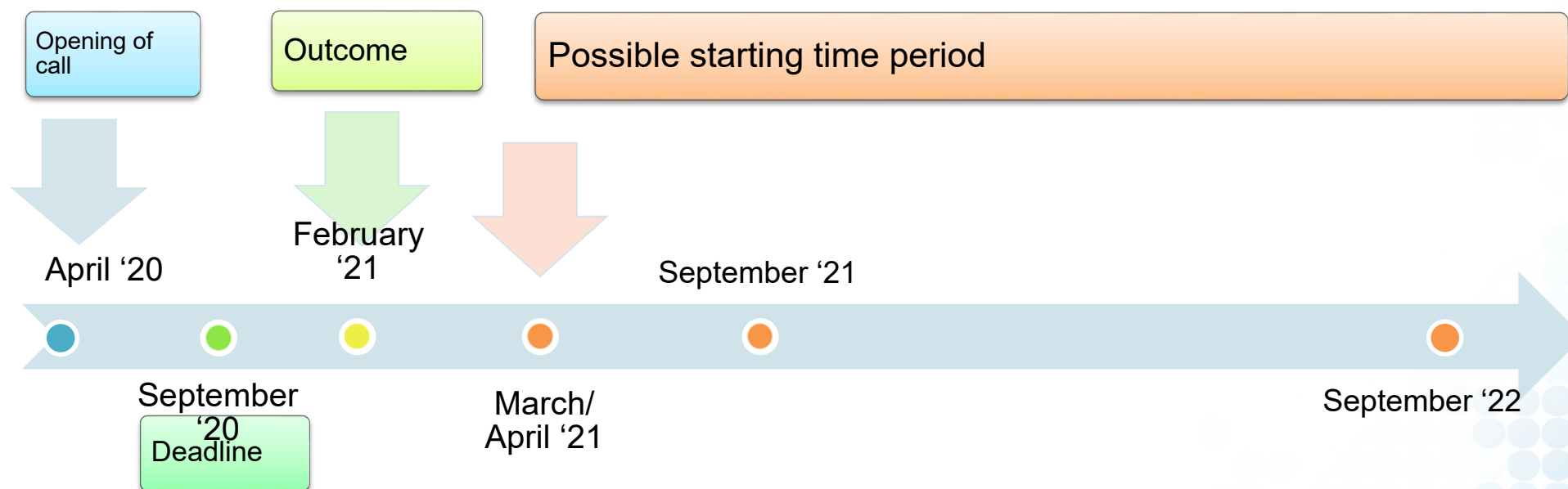
- September-9-2020

MSCA: Individual Fellowships (IF) – Other IF types



- CAR (Career Restart: break from research >1 year)
 - ≤3 years duration
 - special mobility rule: residency in host country no longer than 36 months within last 5 years (for EU long-term residents)
- RI (Reintegration: Coming from outside Europe)
 - special mobility rule: residency in host country no longer than 36 months within last 5 years (for EU long-term residents)
- S&E (Society & Enterprise)
 - Host from the non-Academic sector
 - special mobility rule: residency in host country no longer than 36 months within last 5 years (for all nationals)

MSCA: Individual Fellowships (IF) – potential timeline (all IFs)



MSCA: Individual Fellowships (IF) – Mobility rule (EF & GF)



The researchers shall not have resided or carried out their main activity in the country of their future host organisation for **more than 12 months in the 3 years prior to the deadline for submission of proposals.**

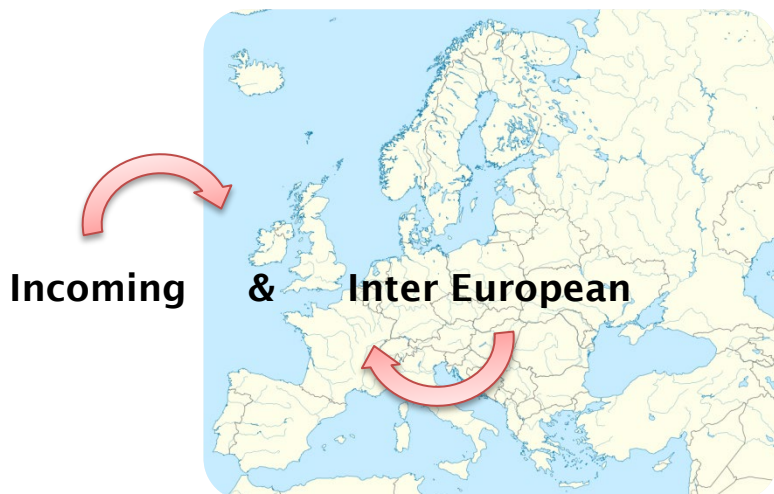
Next deadline 09.09.2020

→ No longer than 12 months residence since 09.09.2017

MSCA: Individual Fellowships (IF) – Types (EF & GF)



European Fellowship EF

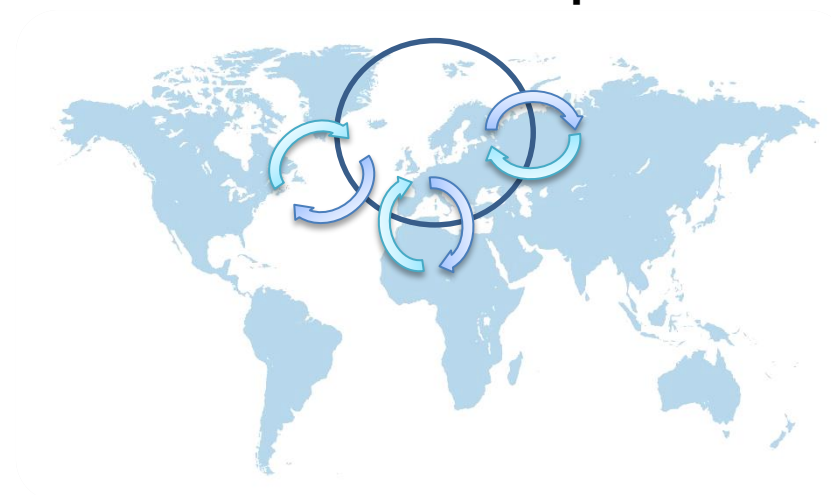


12-24 months

Additional 3-6 month secondment option

Success rate (2018) of ~12% (EF), 8-23 % (GF)

Global Fellowship GF



1st phase: outgoing (12-24 months)
2nd phase: coming back (12 months)

If not European, researcher must have been active in Europe for at least 5 consecutive years

24-36 months

→ Next deadline 09 September 2020 (call opens 04 April)

MSCA: Individual Fellowships (IF) – Host Organisations (all IFs)



- Universities (except S&E Fellowship)
- Public & Private Research Institutes
- International Organisations (e.g. CERN, EMBL)
- Non-governmental Organizations (NGOs)
- Small and Medium-sized Enterprises (SMEs)
- Big companies

MSCA: Individual Fellowships (IF) – Budget



- The Host organisation receives the funding
- You get hired by your host institution
- The Host organisation will get the following amounts for each month of your fellowship:

| | Researcher unit cost [€/month] | | | Institutional unit cost [€/month] | |
|----|--------------------------------|--------------------|--------------------------------|---------------------------------------|------------------------|
| | Living allowance * | Mobility allowance | Family allowance (conditional) | Research, training & networking costs | Management & overheads |
| IF | 4880* | 600 | 500 | 800 | 650 |

* adjusted by different country correction coefficients

‘Special Needs ALLOWANCE’: Additional funding available for fellows with disabilities (< €60’000 pp)

MSCA: Individual Fellowships (IF) – Budget



EXAMPLE

Max Planck Institute (Germany), with family

- Monthly Salary (before tax):

$4'880\text{€} \times 0.97 + 600\text{€} + \underline{500\text{€}}$ - (social contribution)

5'833.6€ - (social contribution)

PostDoc Level: Marie Skłodowska-Curie Actions Individual Fellowships (IF) – next steps



- Specify your long-term goals
- Identify the gap of your CV to reach your long term goals
 - Analyze your CV (tools: <http://myidp.sciencecareers.org> / www.rdfplanner.net)
 - The project should close the identified gap
- Networking: You need a supervisor (professor) from an institution in a Member State or Associated Country, who is willing to work with you.
- Get in touch with us
 - OR find support for non-Swiss hosts: <https://ec.europa.eu/info/funding-tenders/opportunities/portal/screen/support/ncp>
- Train your grant writing skills
 - Art of Grantsmanship <http://www.hfsp.org/funding/art-grantsmanship>
- Check the important documents (Guide for Applicants, Work Programme, and proposal templates)
- Visit one of our two applicant trainings (June 25 or July 30)
- Register as MSCA reviewer (aka Expert):
 - <https://ec.europa.eu/research/participants/experts/web/registration>

ERC: Starting Grants



Aim

- Enable talented early-career scientist who have already produced excellent supervised work and show potential to be a research leader to start working independently and establish their own research team and topic.



Requirements

- 2-7 years post PhD
- Proven potential and promising track-record (including at least one important publication without contribution of PhD supervisor)
- European Host Institution (or associated country)



Duration

- 5 years



Contribution

- Project funds up to 1'500'000 € for 5 years
- + 1 Mio (conditional): major equipment, access to large facilities, major experimental and field work, (no personnel costs!)



Submission Deadline

- October -> Next deadline (perhaps) early 2021 #HE

European Research Council (ERC) Starting Grants requirements



Starting Grant (2-7 years post PhD)

- $\geq 50\%$ of working time on ERC project; $\geq 50\%$ of working time in Europe
- Restrictions on resubmission
- UZH requirements: Registration form, signed by Head of Institute and the Dean
- ETH requirements: Support of the Department
- Salary must be covered
- Possible promotion to Assistant Professor, Förderprofessur

***Are your achievements
comparable with those of
past grant winners in your
field?***

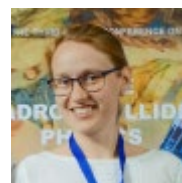
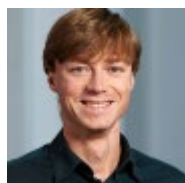
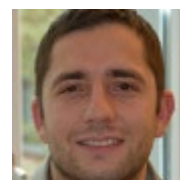
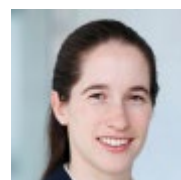
<https://erc.europa.eu/projects-figures/erc-funded-projects>

ERC Starting Grant

What do I get?



- Independence
- Your own research team/programme
- Up to €1.5 Mio for 5 years (+ conditional 1 Mio)
- Clear impact on career, recognition
- Transportability



www.researchprofessional.com




***Research Professional** ETH Zurich - University of Zurich... Register Log in

Funding Awards Our Institution Help

○ Opportunities Search Go

Our Institution



ETH Zurich - University of Zurich

Administrators: [Pascal Halder](#), [EU GrantsAccess](#)

[Join this group](#)


[Start page](#) [People](#) [Expressions of Interest](#)

WELCOME

Welcome to ETH Zurich & University of Zurich's Start page of *Research Professional*, a searchable online database of funding opportunities.

Our Hierarchy

- ETH Zurich - University of Zurich
 - ETH Zurich
 - University of Zurich



2016-2020
ReSTART SEARCH
RESEARCH, TECHNOLOGICAL DEVELOPMENT AND INNOVATION PROGRAMMES

Cyprus RPF Call for Innovation & Investment Experts

The Cyprus Research Promotion Foundation (RPF) is announcing a Call for Innovation

Have a look at [*Research Professional](#)

ETH Zurich and University of Zurich together acquired a license to make this database freely accessible to its researchers.

Jobs on the EURAXESS portal



The EURAXESS - Researchers in Motion portal is a joint initiative of the European Commission and the countries participating in the European Union's Framework Programme for Research.

EURAXESS Jobs is a recruitment tool free of charge

<https://euraxess.ec.europa.eu/jobs/search>

EURAXESS - Researchers in Motion

HOME » JOBS & FUNDING » JOBS SEARCH

Search for jobs

Enter keywords

RESEARCH FIELD 1 selected

RESEARCHER PROFILE 1 selected

SECTOR

COUNTRY

EUROPEAN RESEARCH PROGRAMME

SEARCH NEED HELP?

Your search results (26)

Selected: Philosophy X First Stage Researcher (R1) X

FILTER BY SORT BY SAVE JOB SEARCH LIST

08/03/2017

In collaboration with

| | | |
|--|----------------------|------------------------------------|
| One fixed term researcher position, Dep. FISPPA sc 11/C4 Aesthetics and philosophy of languages ssd... | APPLICATION DEADLINE | 06/04/2017 23:59 - Europe/Brussels |
| | RESEARCH FIELD | Philosophy > Other |
| | LOCATION | Italy |
| | COMPANY/INSTITUTE | Università degli Studi di Padova |

Thank you!

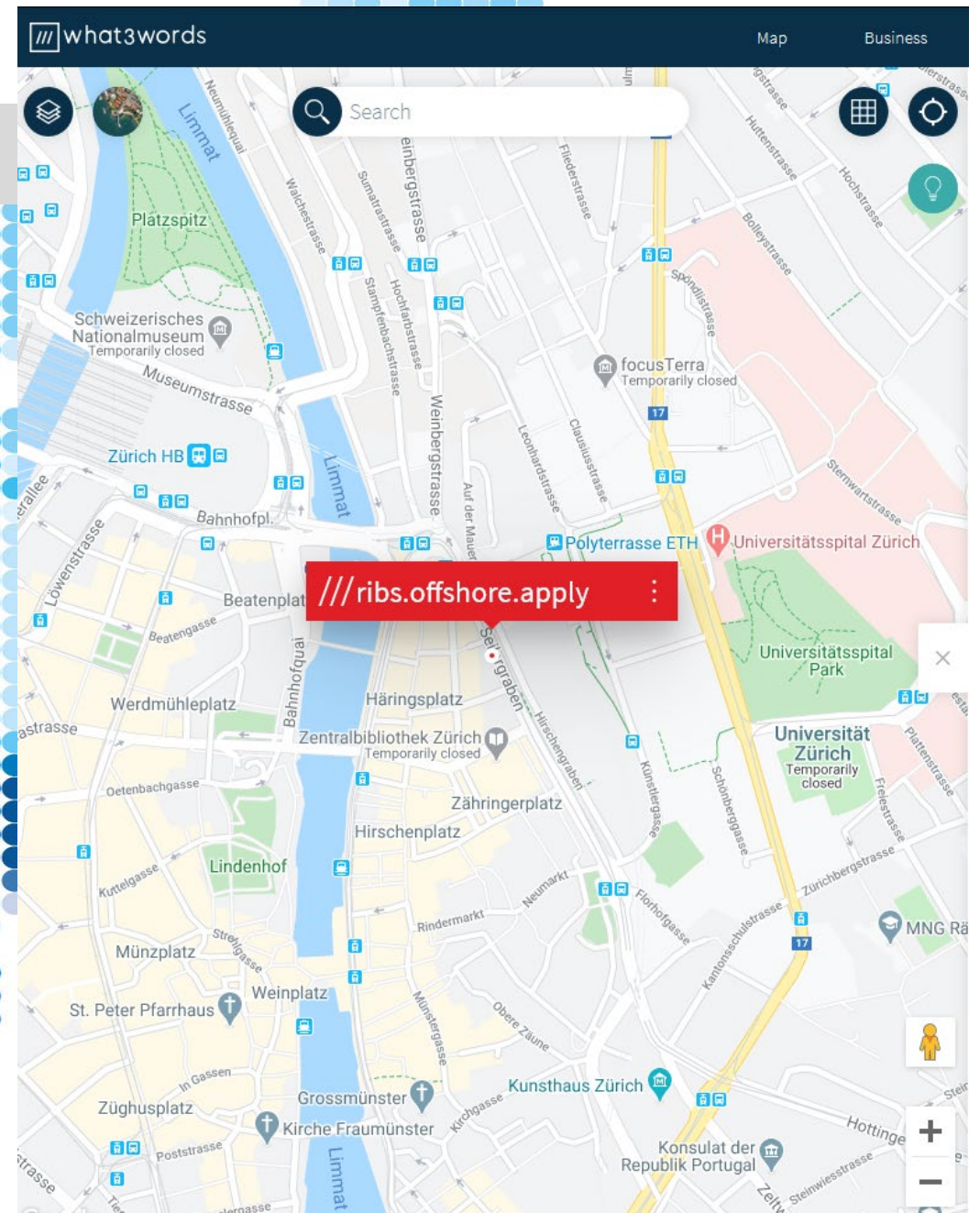
EU GrantsAccess
International Research Programmes

ETH Zürich
University of Zurich
Seilergraben 53
8001 Zurich
Switzerland

grants@sl.ethz.ch

+41 44 634 53 50

<http://grantsaccess.ethz.ch/en/>



Links (check eligibility first)

| Scheme | links |
|--------------------------|---|
| MSCA-EF | <ul style="list-style-type: none">• MSCA webpage: http://ec.europa.eu/research/mariecurieactions/• Proposal submission• CV analysis tools: http://myidp.sciencecareers.org / www.rdfplanner.net |
| ERC-StG | <ul style="list-style-type: none">• ERC webpage: http://erc.europa.eu/• Proposal submission: http://ec.europa.eu/research/participants/portal/desktop/en/opportunities/index.html |
| HFSP | http://www.hfsp.org/funding/postdoctoral-fellowships |
| EMBO | https://www.embo.org/funding-awards |
| SGES | https://www.sbf.admin.ch/sbf/de/home/themen/bildungsraum-schweiz/stipendien/eskas.html |
| SNF Ambizione | http://www.snf.ch/en/funding/careers/ambizione/Pages/default.aspx |
| Branco Weiss | https://brancoweissfellowship.org/ |
| ETH Fellows | https://www.ethz.ch/en/research/research-promotion/eth-internal-programmes/eth-fellowships.html |
| Directory of Foundations | https://www.edi.admin.ch/edi/de/home/fachstellen/eidgenoessische-stiftungsaufsicht/stiftungsverzeichnis.html |
| Open Grants | Funded and not funded proposals from different funding agencies https://www.ogrants.org/ |
| UZH Foundation | https://uzhfoundation.ch/de/ |

Funding for women:

- SNF: PRIMA:
<http://www.snf.ch/en/funding/careers/prima/Pages/default.aspx>
- American Association of University Women (AAUW):
<http://www.aauw.org/what-we-do/educational-funding-and-awards/international-fellowships/>
- L'Oréal-UNESCO For Women in Science Fellowships:
<http://www.fwis.fr/en/fellowships>
- Graduate Woman in Science (GWIS) National Fellowships Program:
http://www.gwis.org/?page=fellowship_program